



COMPENDIUM



WELCOME

Thanks so much for coming to hang at The Lodge, we are so excited you're here!

We thought you might like to know a little bit about The Lodge!

The Lodge Jamberoo was built in the 60's, it was the first location of Oktoberfest in Australia, in the late 60's, the Aussie Olympic team trained in the pool, and it had one owner for more than 30 years.

In September 2022, we took over and underwent a massive renovation and completed stage 1 of the reno 14 weeks later. This included the restaurant, bar, champagne garden, games room, river room, spa treatments rooms, pool, wedding hall parts, and many gardens and outdoor spaces.

We made some changes and upgrades to the hotel and rooms, and will be doing a huge overhaul on the hotel as stage 2 - sometime in the future!

When we first stepped foot into this property, it gave us Nostalgic Euro vintage vibes. The soaring pine trees, terracotta terraces, rendered arbour walls, and architectural nods on the restaurant. Were we in the Swiss mountains? The Italian Alps? The French Riviera? It certainly didn't feel like the country mountains of NSW.

So, we leaned right into that and let our imagination take wild. We partnered with the incredible minds at Barbara Architecture and collaborated to create the world of The Lodge.

Kick back, chow down, drink up, play nice, be naughty... after all, you're in Europe, for a getaway, wink wink.

xx The Lodge Jamberoo Team

THE ROOMS

TV: There is a TV in your room with foxtel and free to air channels.

PHONE: There is a phone in your room. Dial 302 for reception. Dial 0 for a line out. Calls to landlines are free, other calls will be charged to you.

HOUSEKEEPING: Your room will be made up daily.

WIFI: We are a country property with limited wifi. We have installed the best we can get, but it's still not on city speed. Bu that's why you come here - to get off city speed. Streaming isn't possible but if you really need to connect for emails etc you can:
NETWORK: The Lodge Guest WiFi - no password

CHECK IN AND CHECK OUT: Check in is 3pm and Checkout is 10am. To avoid additional charges please ensure you leave your room clean, remove all rubbish and food and turn off lights and air conditioning.

KEYS AND SECURITY: Please return all room keys to reception upon checkout.

MINI BAR: There is a mini bar in room with snacks and drinks. There is a menu with costs for all items.

IRON AND IRONING BOARD: There is an iron and ironing board located in the wardrobe.

FIRES AND EVACUATION: Please refer to the signs on the front door for your fire exit information.





THE GROUNDS

POOL

Opening times: 7am to 10pm. Children must be supervised at all times. You can order food and drinks to the pool using the QR codes located around the pool.

GYM

We have a fully equipped gym with cardio machines, weights, and more. Opening times: 6am to 10pm. Children must be supervised at all times.

DAY SPA

Relax and unwind with a facial, massage or body treatment. Book online or call reception to book. Full menu online or grab one from reception.

SAUNA

There is a timber sauna located on the spa deck outside the gym. Opening times: 6am to 10pm

HOT TUB

Located on the spa deck. Opening times: 7am to 10pm

TENNIS COURT

Opening times: 7am to 10pm

Ask for tennis rackets, balls and basket balls in reception.

BIKES

We have complimentary bikes for your use. You can book them in reception.

GAMES ROOM

The games room is open 7am-10pm. There is a pool table, ping pong table, kids pool table, seating and board games located in the cupboards.

THE LODGE MAP



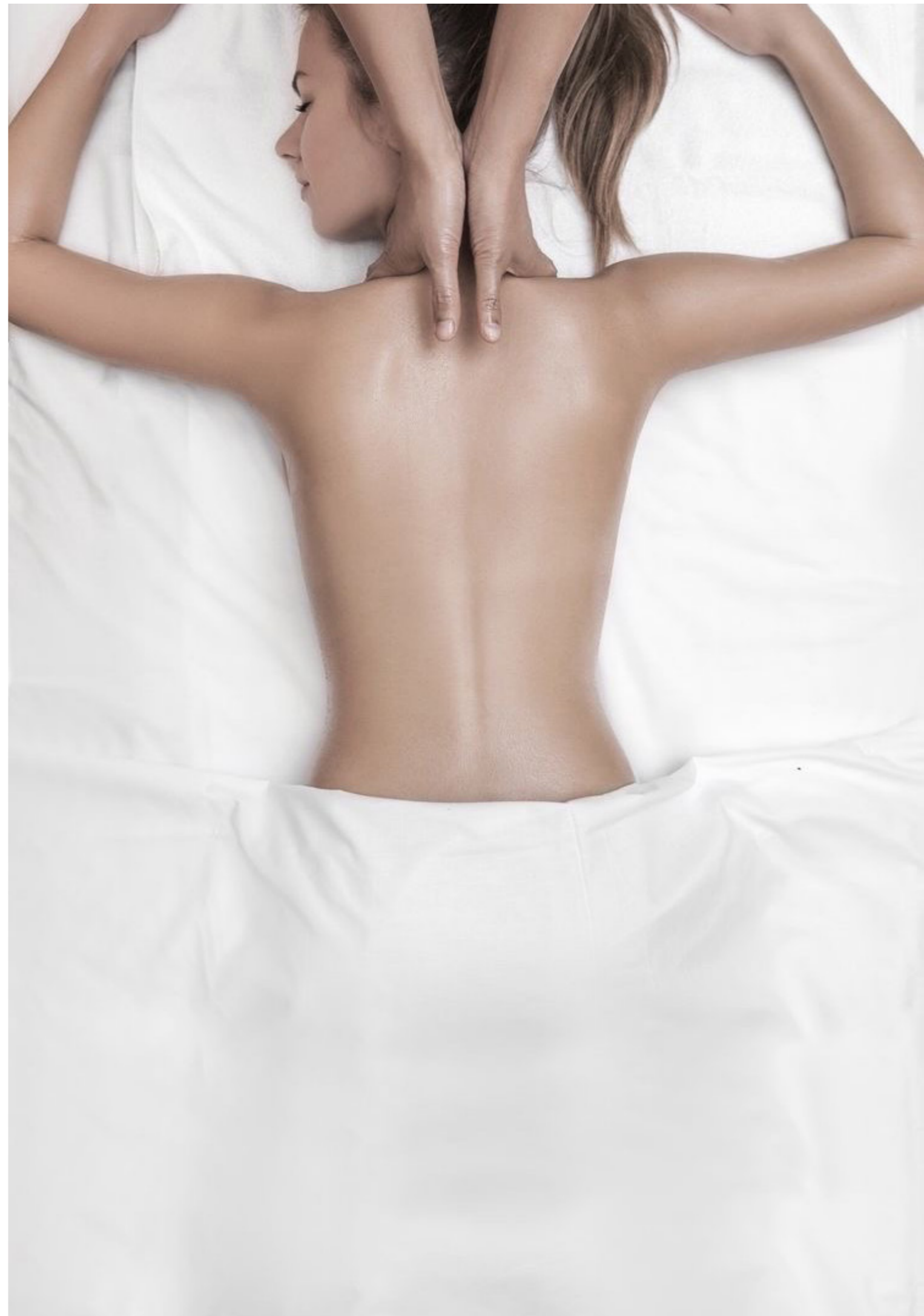


POOL SERVICE

Poolside food and drink service is available to all in-house guests. Use the QR codes located on the pool deck and pool umbrella bases and order fresh food and drinks right to you.

HEALTH, BEAUTY AND MASSAGE

If you are looking to totally relax and unwind, you really don't need to leave The Lodge. Book a massage, facial or body treatment with our day spa team. And why not use the sauna and hot spa before or after to totally bliss out.





Lulu's

RESTAURANT

A meal in Lulu's and a drink in Fin's bar is an absolute must when you come to The Lodge. Chill in our champagne garden for a pizza or grazing board, or eat inside for something a little fancier.

OPENING HOURS
12pm - 8pm everyday

FIN'S BAR

Fin's Bar is just off the restaurant and the coolest place for a triple, one of our killer cocktails, or a drop from our great wine menu.

OPENING HOURS
12pm - 8pm everyday



THINGS TO DO LOCALLY

PICNICS

Have a country picnic by the river, around the grounds or somewhere local. We can pack a picnic basket for you, which includes wine, a grazing box, a rug, cutlery, glasses and plates. Call reception to book.

KIAMA AND SURROUNDED BEACHES

Kiama is a beautiful seaside town on the NSW South Coast, best known for its beaches, blowholes, volcanic rock formations and scenic stretches of coastal walks. It's a favourite with families looking for a laidback holiday spot and surfers chasing world-class waves. You will find plenty of history and some of the state's best ocean pools.

KIAMA COASTAL WALK

Ocean views, spectacular rock formations, and unspoilt beaches. The Kiama Coast Walk has three sections, made up of a series of shorter walks/cycling paths from the mouth of the Minnamurra River south through Kiama to Gerringong's Warri Beach. Offering a mix of sealed paths, grassed tracks and beach walking, the hills are gentle enough for most fitness levels. An unbroken ribbon of exploration stretching approximately 20 kilometres.

JAMBEROO ACTION PARK

The best plan to spend the day with family or friends! And it's just 8 minutes drive from The Lodge.

Contact reception to get your tickets and avoid queues at the entrance.

BUDDEROO NATIONAL PARK

Budderoo National Park, on the south coast of NSW, is known for its gorgeous waterfalls and lookouts. Enjoy rainforest walks and birdwatching opportunities.

ILLAWARRA FLY TOP

The Treetop Walk is a gentle 1.5-kilometre loop track with 500 metres of elevated steel walkway through the treetops, some 20-30 metres above the forest floor.



SHOPPING, CHEMISTS SUPERMARKETS

There is plenty of great shopping around the area and in the suburbs and villages surrounding Jamberoo.

NERILLE ANTIQUES JAMBEROO

A cute little local antique store; check it out on the main street in town, a short drive away. 26 Allowrie Street, Jamberoo

JAMBEROO FLORIST AND GIFTS

A gorgeous little floral and gift store located on the main road in town. 8/18 Allowrie Street, Jamberoo

IGA JAMBEROO

There is an IGA in Jamberoo town, 3 Allowrie St, Jamberoo NSW 2533. It opens every day until 8 pm and Sundays until 7 pm.

KIAMA HEALTH PHARMACY

Shop 5/143 Terralong St, Kiama NSW 2533

KIAMA VILLAGE SHOPPING CENTRE

143 Terralong Street, Kiama NSW 2912

STOCKLAND SHELLHARBOUR SHOPPING CENTRE

211 Lake Entrance Rd, Shellharbour City Centre NSW 2529

KIAMA

Other than the cute lil town that is Jamberoo, the closest local shops are in Kiama, where you will find plenty of shops, including chemists, supermarkets, gift stores, fashion so much more!

GERRINGONG

Gerringong is 20 minutes drive away and has some great stores, cafes, restaurants and a great beachside- town-vibe.

BERRY

Berry is 25 minutes away and always perfect for strolling shops - from clothes to giftware to lolly shops and of course, the famous Berry doughnut van!





NO! DON'T GO!

We can't believe it's time for you to go already!

Not ready to leave?

All good – just stay another night, or more! In fact, we would so love you to stay, we'll give you a **15% discount** off our rack rate for any extended nights you add on (subject to availability).

Just contact reception.

If you have to leave, here are some pointers for a smooth check out:

- Check the room to ensure you have everything
- Switch off the lights and air conditioner
- Come to reception to check out and pay for room and mini bar charges.
- Text us to let us know if anything was broken or lost during your stay.
- Have a safe drive home!

Tell everyone how crazy cool your stay was at The Lodge by leaving us a review online. (pleeease?) Yeooooow, thaaaaanks!

THE 
VODGE

